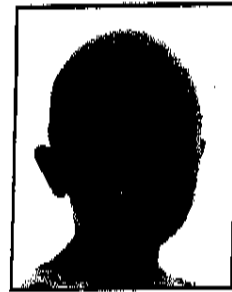


# Thank You for Your Gift to St. Jude!



To charge your contribution to a debit/credit card, please see reverse side.

Visit [stjude.org/joinus](http://stjude.org/joinus) to learn more about the impact gifts like yours have at St. Jude.



Cassidy  
leukemia

Heavenly Brickks Charitable Foundation  
PO Box 721  
Goldens Bridge, NY 10526-0721



AGGK19110500100248237662

Dear Mrs. Romano,

Thank you, thank you! Your generous gift in November 2019 to St. Jude Children's Research Hospital will help us continue lifesaving care for kids like Cassidy. When she began to look very pale and developed dark circles under her eyes, bloodwork revealed the unthinkable: Cassidy had leukemia. She and her family were referred to St. Jude.

Your gift helps ensure that families like Cassidy's never receive a bill from St. Jude for anything -- not for treatment, travel, housing or food -- because we believe all a family should worry about is helping their child live. But your gift does more than that. Your generosity helps St. Jude give hope to Cassidy and all the children who walk through our doors each year. God bless your good heart.

For the children,

*Marlo Thomas*  
Marlo Thomas

P.S. Please enjoy the enclosed gift as a small token of my appreciation for your generosity and kindness toward the kids of St. Jude.

501 St. Jude Place • Memphis, TN 38105 • 1-800-822-6344 • [stjude.org/joinus](http://stjude.org/joinus)